



Redmayne Arnold & Harris
estate agents, letting agents & surveyors

rah.co.uk



12 Granta Terrace, Great Shelford, Cambridge, CB22 5DJ
£1,500 Per Month



12 Granta Terrace, Great Shelford, Cambridge, CB22 5DJ

£1,500 Per Month

A beautifully presented two bedroom property in a highly sought after location in the popular village of Great Shelford, offering excellent access to local amenities, City Centre, Addenbrookes hospital, Biomedical campus, to mainline station and M11.

This newly decorated property features a large bright living area, perfect for a couple or a family, and a contemporary open plan kitchen and dining area, ideal for everyday living. Upstairs the property boasts two bedrooms, a spacious double bedroom and cozy single bedroom along with a family bathroom.

To the rear, you'll find a nicely sized garden. On-street parking for one car is available outside. The property is offered unfurnished and managed by Redmayne Arnold and Harris.

Council Tax Band - C
Minimum 12 Month Tenancy
Deposit: £1730
Holding Deposit: £360

Description



Situation

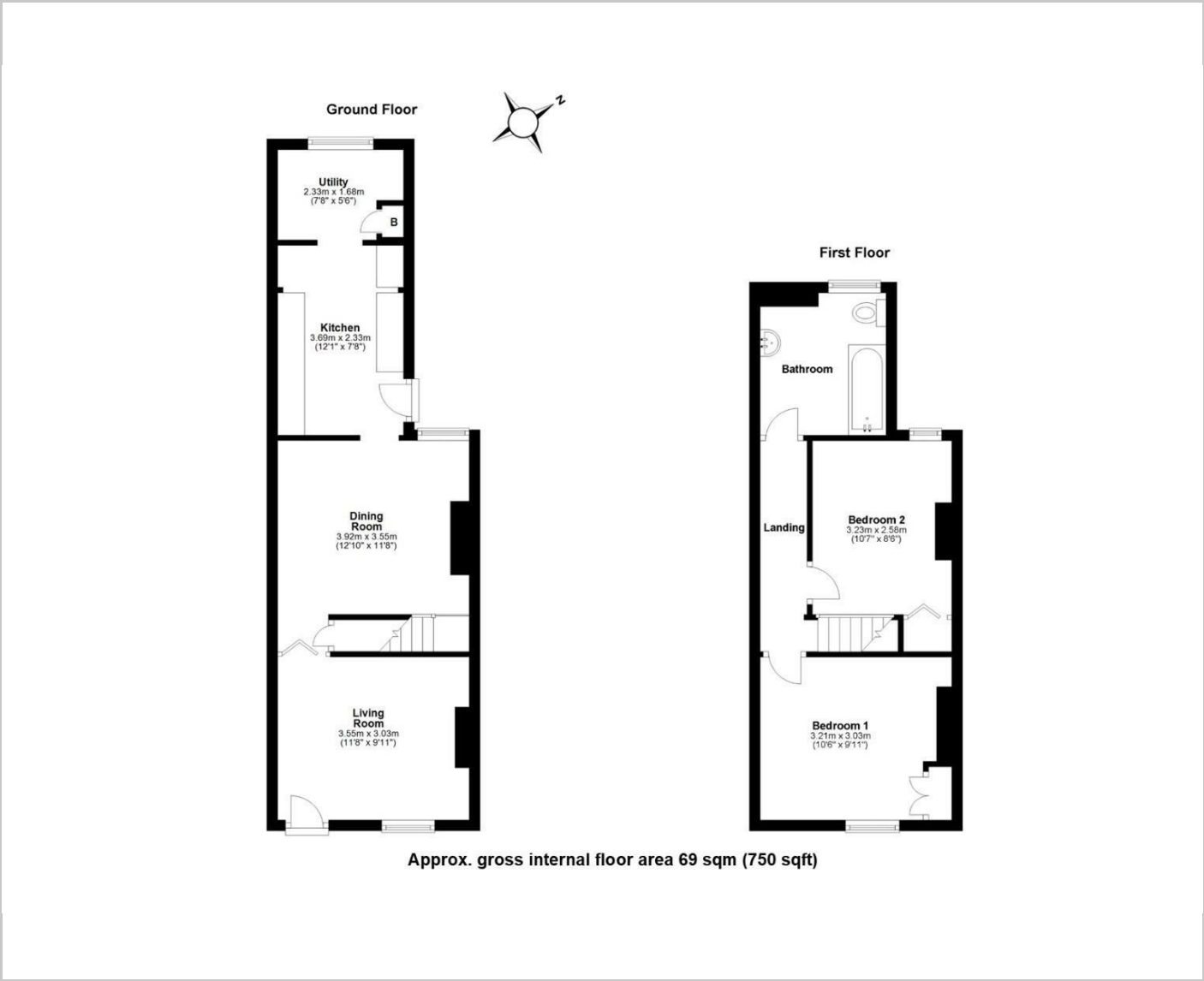


Furnished

Council Tax Band: C

Available: 6th June 2025

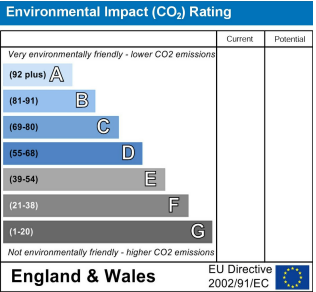
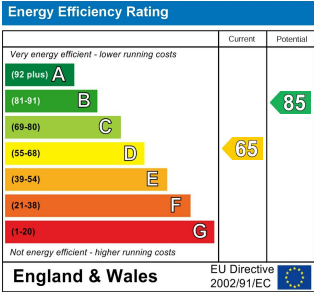
Floor Plans



Area Map



Energy Performance Graph



These particulars, whilst believed to be accurate are set out as a general outline only for guidance and do not constitute any part of an offer or contract. Intending purchasers should not rely on them as statements of representation of fact, but must satisfy themselves by inspection or otherwise as to their accuracy. No person in this firms employment has the authority to make or give any representation or warranty in respect of the property.